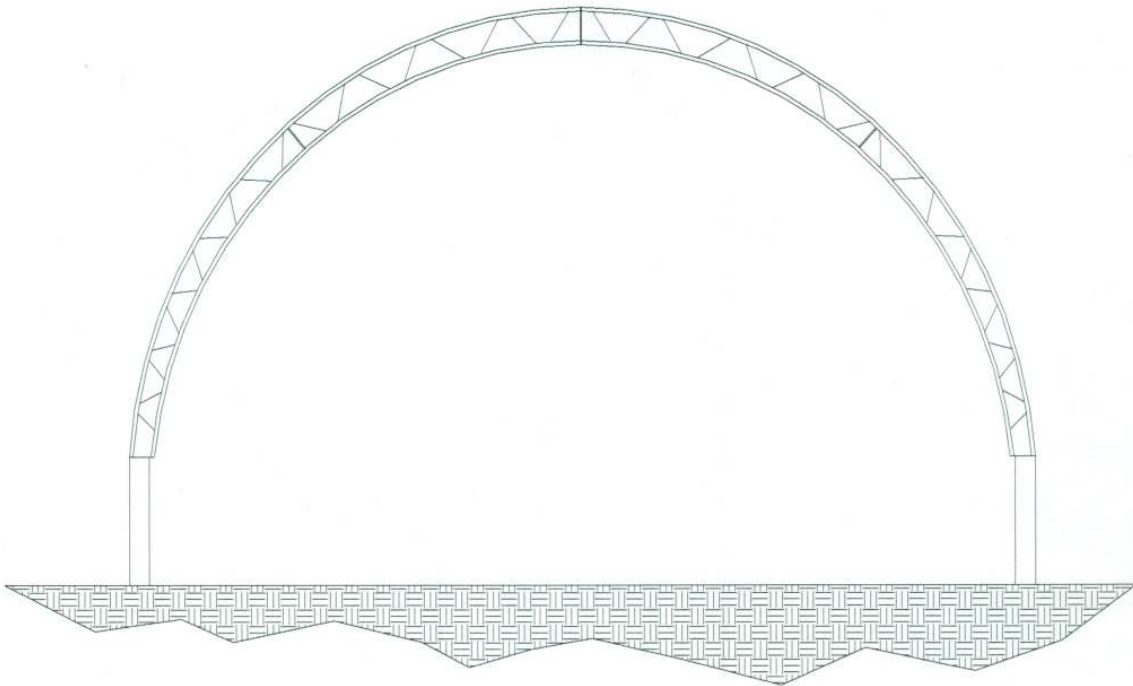


INSTRUCTIONS FOR
42' TRUSS BARN



Customer: _____

PO #: _____

Silver Stream Shelters

Toll free: 1-877-547-4738

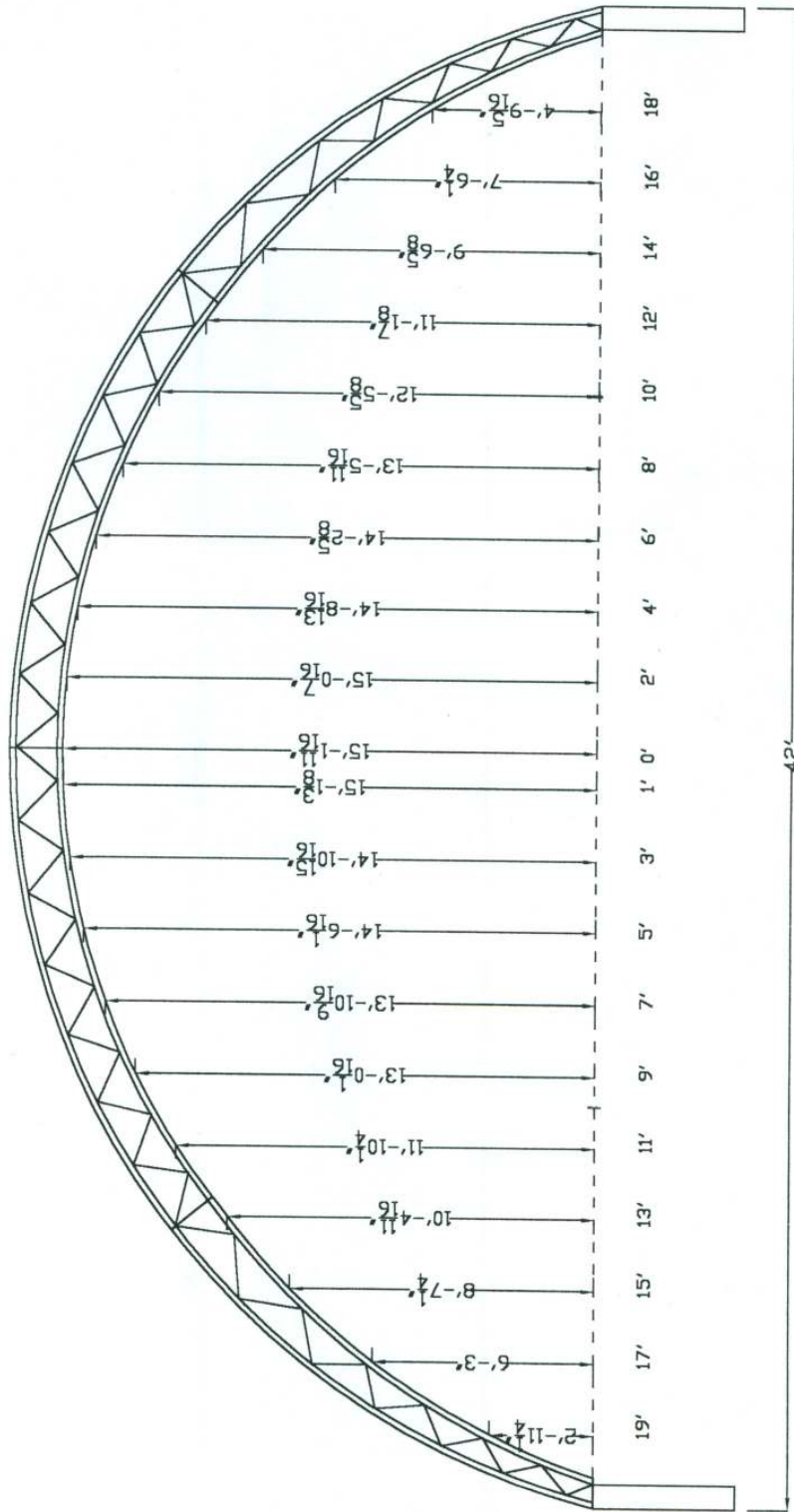
Instructions For 42' Trussed Barn

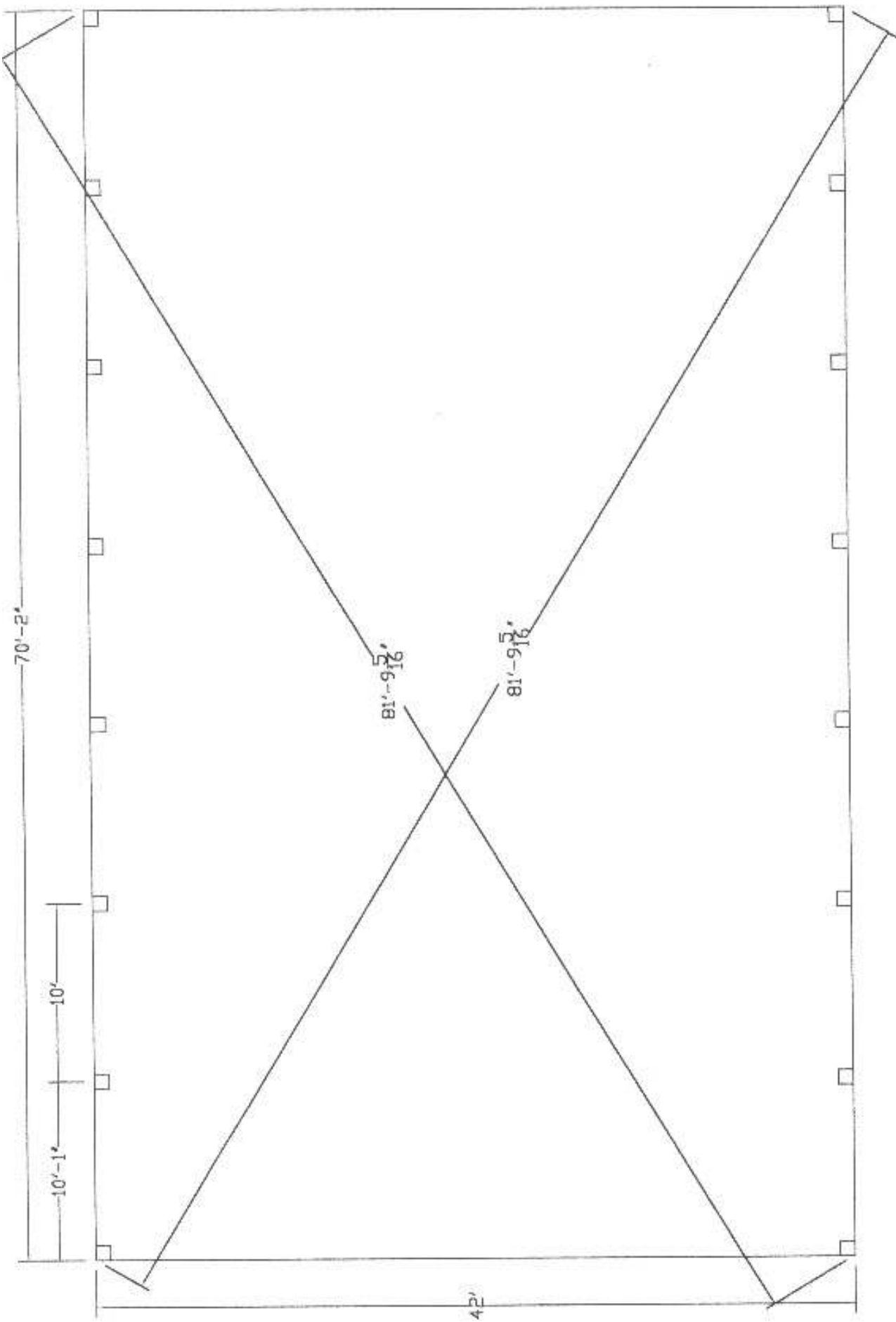
1. Using stakes, peg out the size of your building. Make sure that it is square to within 1". Refer to figure 1 for exact pole placement. Gavel or crushed rock is recommended for back fill for all posts. (see figure 2)
2. The outside of the first post to the center of the second is 10'-1". The center of the second post to the third is 10'-0". All other posts are 10'-0" center to center. The last post placed the same way as the first. (see figure 1)
3. Assemble all rafters on the ground. Bolt together using the 7/16" bolts and lock nuts provided. The 42' truss barn is a 4 piece rafter. You will need two center sections and two leg section per rafter. Be sure to tape all joints with tape provided. Apply min. 3 layers.
4. Lift the first rafter into place. The first rafter has a flange on one side only. (see figure 3) Use a fork lift or front end loader to do this. Lag the rafter to the post with the 3/8" lags provided. Brace the rafter with long 2x4's or rope to secure locations on the ground.
5. Lift the second rafter into place. Lag to pony wall and install all cross bracing. ****Be sure that when you lag the rafter to wall that the center to center is 10'-0".**
6. Repeat step 5 until all rafters are in place. The last rafter is the same as the first.
7. Once all rafters are in place the end braces can all be installed. (see figure 4)
8. Bolt on the 2" winches where need. Use two lag bolts per box winch. (see figure 4)
9. The smaller 1" brass winches go on each corner, for drawstring on tarp.

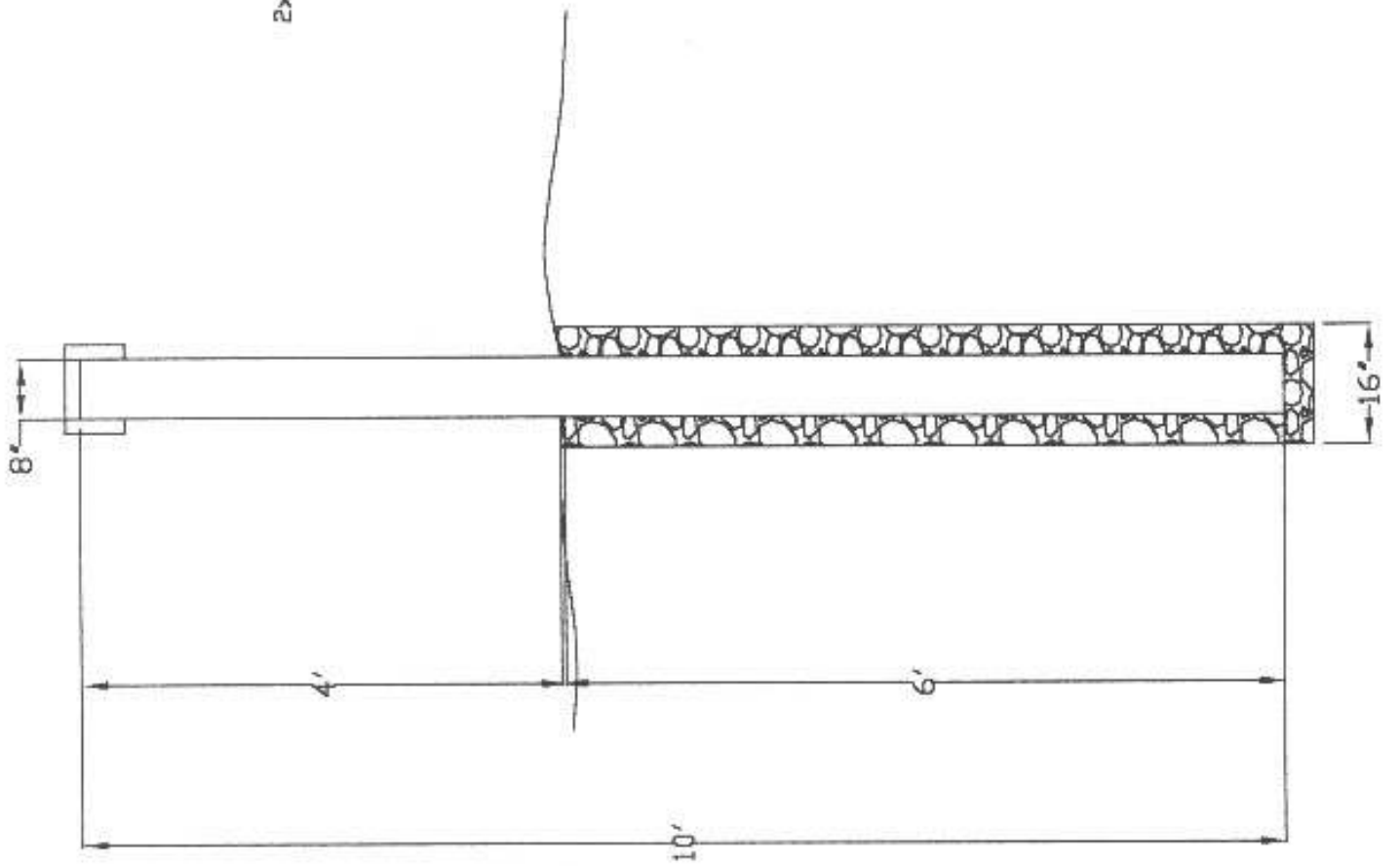
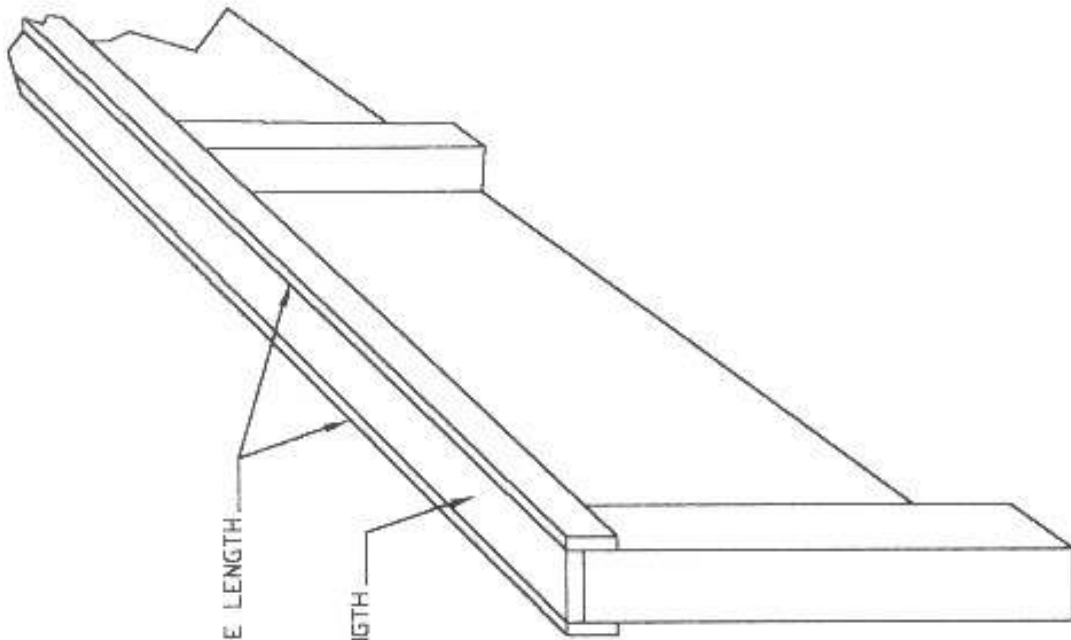
Tarp Installation

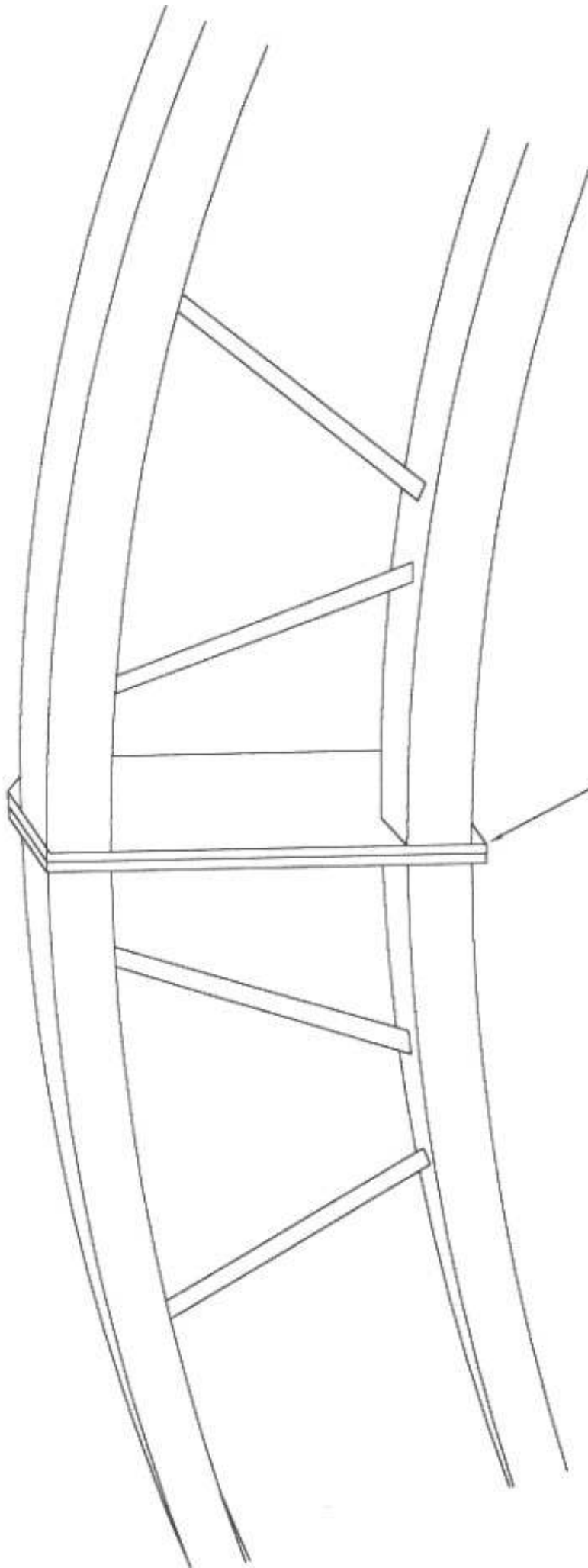
****DO NOT ATTEMPT ON A WINDY DAY.** A slight breeze blowing in to the tarp works best.

10. Roll out the tarp along the building.
11. Assemble tie bars and insert in to pockets in tarp. Be sure to tape all joints before sliding pipe into tarp.
12. While tarp is along building mark on the pocket where each post is. Using a sharp knife cut through the pocket on both sides just above the pipe. A 2"-3" slot is sufficient. (see figure 5)
13. Loop belts through cuts in tarp and slip both ends into box winch. Give the winch a few clicks to secure the belt.
14. Tie ropes to the tie bar every 20'. Weight the ends of the rope and throw over the building. Slowly pull tarp over the building by hand. Do not use power equipment to do this (ie. trucks, tractors, etc.) (see figure 8)
15. Once the tarp is over the building, put 2" belt around pipe and into box winches on the other side. Do not tighten the winches. Be sure that the tarp is centered over the building and then tighten winches.
16. Using the 1" belting provided lace the ends of the tarp to the top pipe of rafter. Start at the bottom of the rafter and work your way around the rafter. Do this for both ends
17. Once the end belting is tight you can now tighten the side ratchets.
****Be sure that you tighten the end belting first BEFORE tightening sides.**
18. Lastly tighten the drawstring with the four corner ratchets.



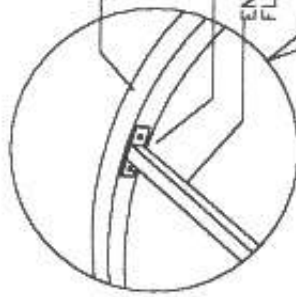






END RAFTER HAS
NO FLANGE ON
ONE SIDE

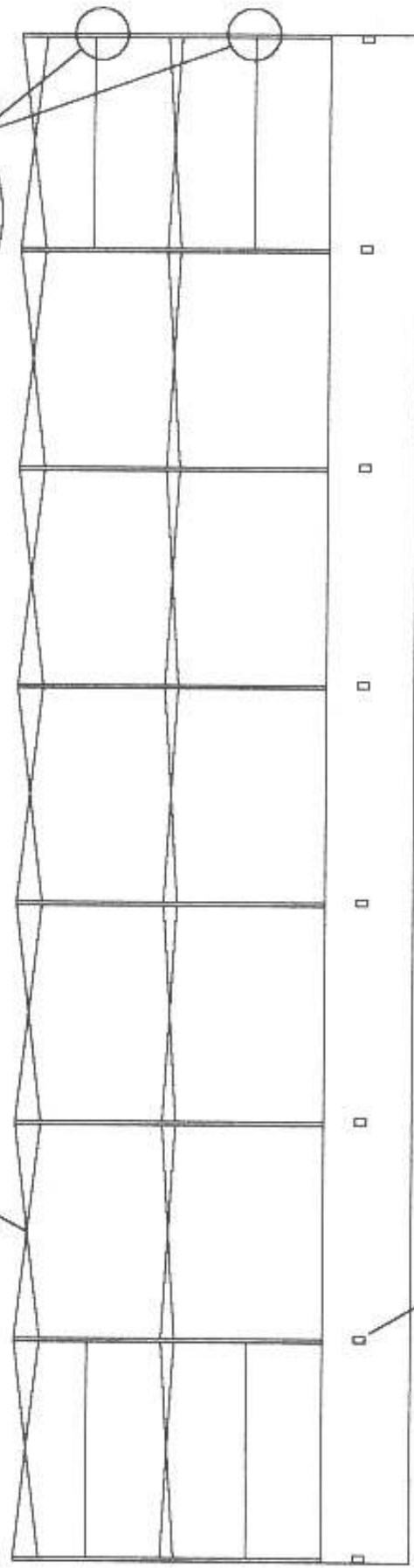
WIND BRACING IS INSTALLED THE SAME ON BOTH ENDS



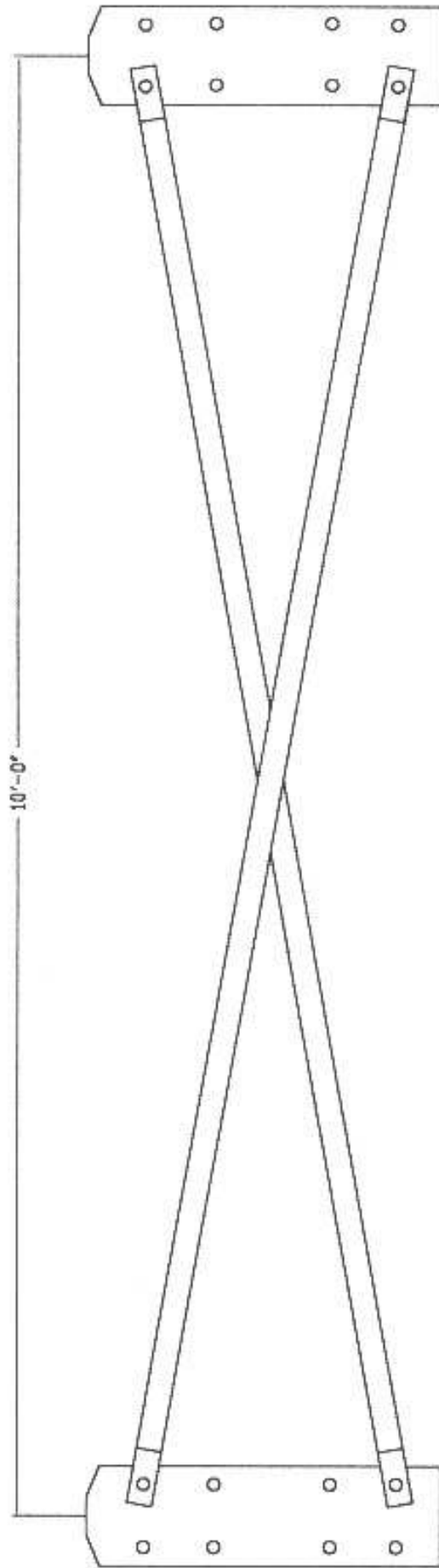
RAFTER PIPE

GROSS BRACE
2" SGR. PIPE

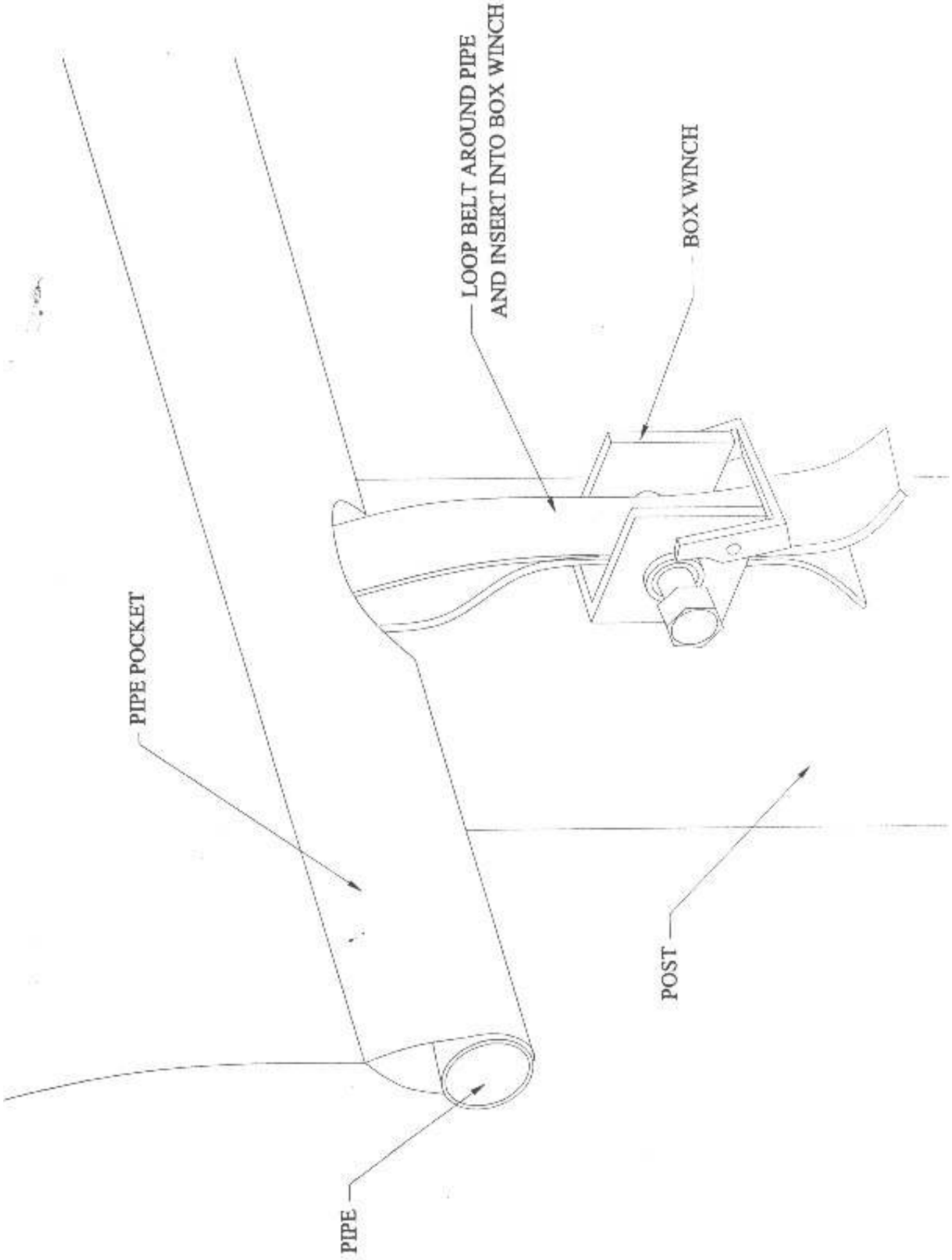
USE 2 SELF TAPP. SCREWS
END BRACE WITH
FLAT BRACKET WELDED ON

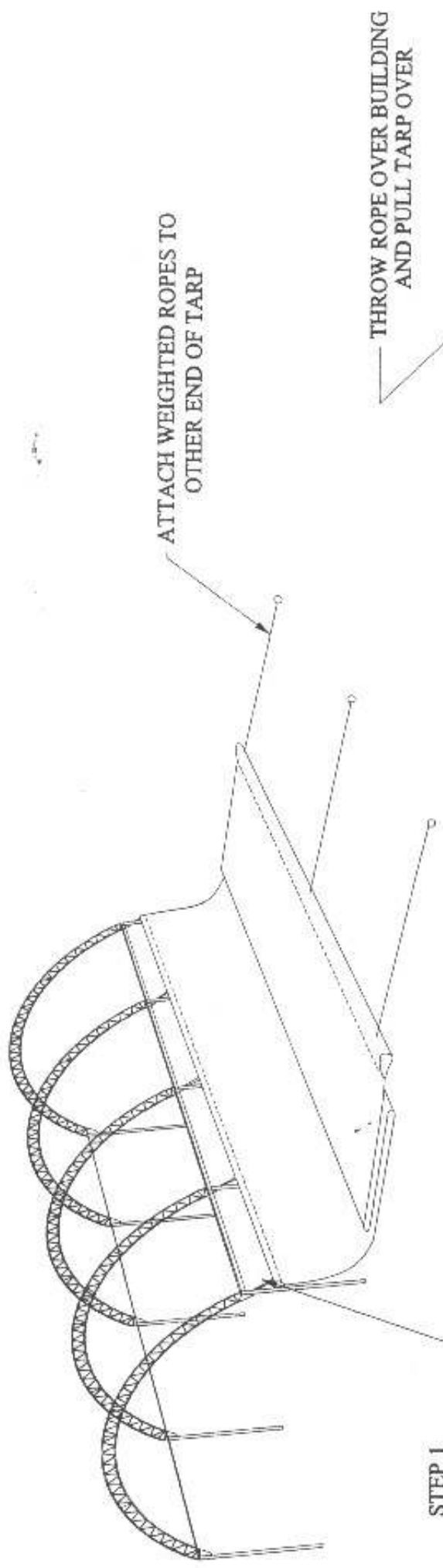


2" BOX W/INCH
PLACE 24" FROM TOP OF WALL



CROSS BRACING AT JOINT PLATE

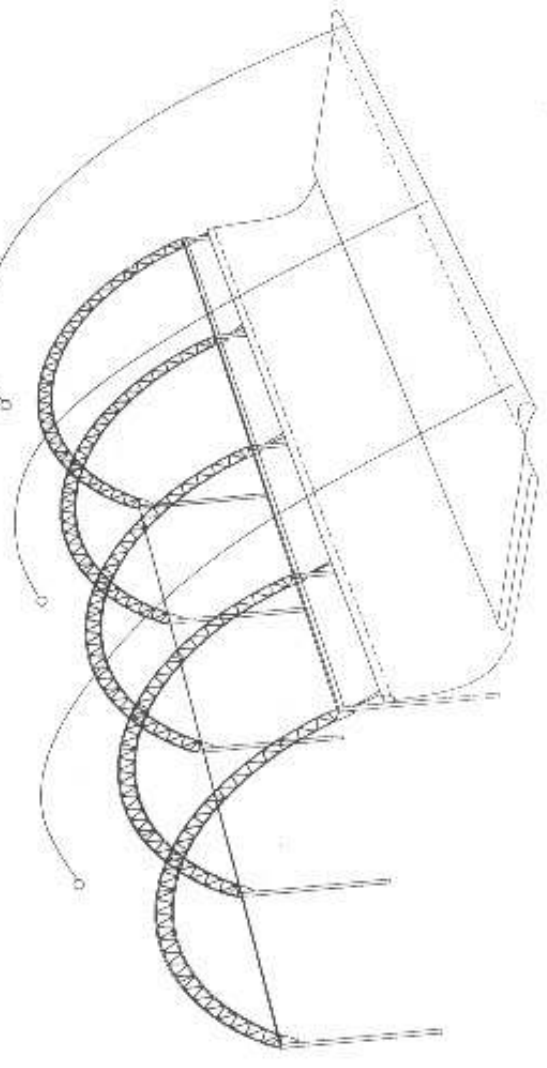




STEP 1

USING 2" BELTS ATTACH TARP TO BOX WINCH

THROW ROPE OVER BUILDING AND PULL TARP OVER



STEP 2